

CD

19: SPLIT TRACK/MELODY

20: FULL STEREO TRACK

THE WIND CRIES MARY

WORDS AND MUSIC BY
JIMI HENDRIX

C VERSION ROCK BALLAD

E^b E F Eb/G E/G[#]F/A Eb E F Eb/G E/G[#]F/A

Musical staff with notes and chords for the first line of the piece.

RHYTHM

Musical staff with notes, chords, and dynamics for the second line.

Musical staff with notes, chords, and dynamics for the third line.

Musical staff with notes, chords, and dynamics for the fourth line.

Musical staff with notes, chords, and dynamics for the fifth line.

Musical staff with notes, chords, and dynamics for the sixth line.

Musical staff with notes, chords, and dynamics for the seventh line.

Musical staff with notes, chords, and dynamics for the eighth line.

Musical staff with notes, chords, and dynamics for the ninth line.

Musical staff with notes, chords, and dynamics for the tenth line.

CD

19: SPLIT TRACK/MELODY

20: FULL STEREO TRACK

THE WIND CRIES MARY

WORDS AND MUSIC BY
JIMI HENDRIX

Bb VERSION ROCK BALLAD

F F# G F/A F#/A#G/B F F# G F/A F#/A#G/B

RHYTHM

PLAY *mp*

THE WIND CRIES MARY

WORDS AND MUSIC BY
JIMI HENDRIX

CD

19: SPLIT TRACK/MELODY

20: FULL STEREO TRACK

E♭ VERSION ROCK BALLAD

C C# D

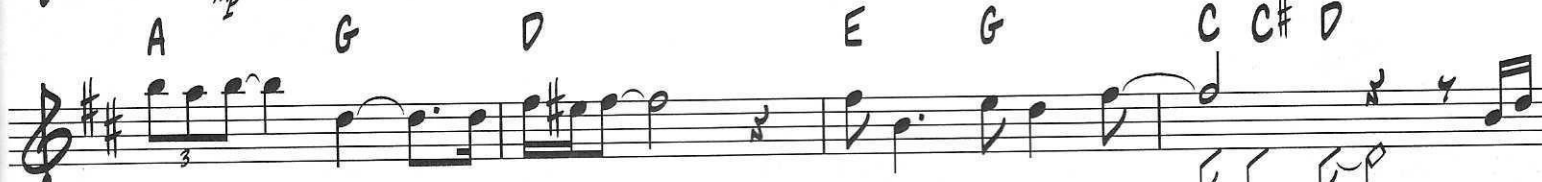
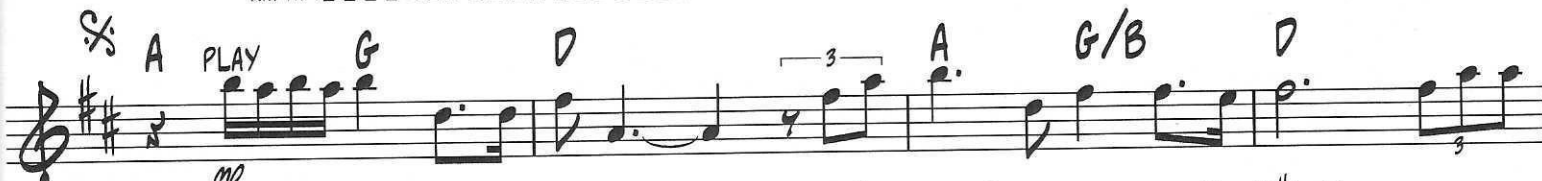
C/EC#/E#D/F#

C C# D

C/EC#/E#D/F#



RHYTHM



TO CODA

SOLOS (4 CHORUSES)



D.S. AL CODA

CODA

