

THE GIRL FROM IPANEMA (GARÔTA DE IPANEMA)

-ANTONIO CARLOS JOBIM/NORMAN GIMBEL/VINICIUS DE MORAES

(BOSSA)

Fmaj7 *G7*

G-7 *Gb7b5* *1. Fmaj7* *Gb7b5*

2. Fmaj7 *Gbmaj7*

B7 *F#-7*

D7 *G-7*

Eb7 *A-7* *D7b9 (#11)*

G-7 *C7b9 (#11)* *Fmaj7*

G7 *G-7* *Gb7b5*

Fmaj7 *(Gb7b5)*

1^o ver.

THE GIRL FROM IPANEMA

- JOHIM

171.

BOSSA

Fmaj7

G7



G-7

Gb7

1. Fmaj7

Gb7



2. Fmaj7

Gbmaj7



B7

F#-7



D7

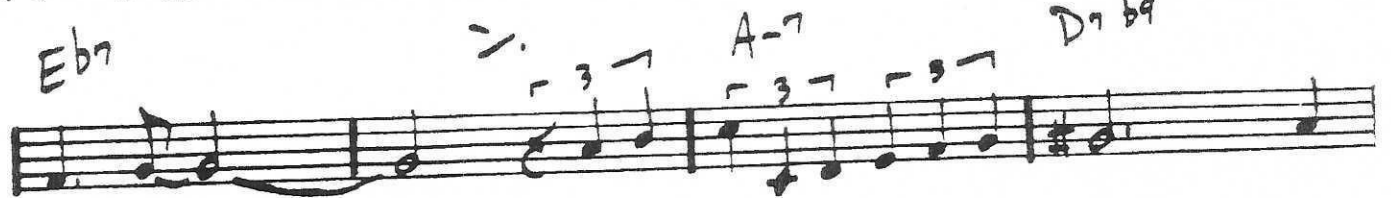
G-7



Eb7

A-7

D7 b9



G-7

C7 b9

Fmaj7



G7

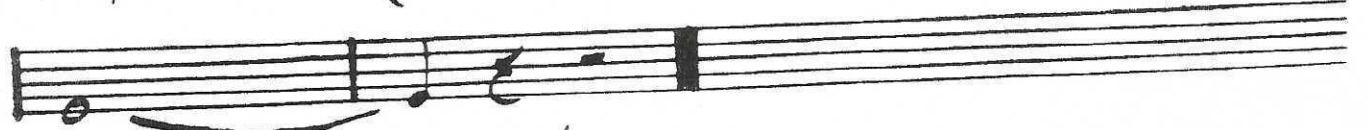
G-7

Gb7



Fmaj7

(Gb7)



ALMIRAO CARLOS JOHIM - "GETZ/GILBERTO"

"The Composer of DESAFINADO, PIA"

B^b ver

GIRL FROM IPANEMA

- JOBIM

171.

(Bossa) Gmaj7 A7 (EM7)

A-7 Ab7 1. Gmaj7 Ab7

2. Gmaj7 Abmaj7 (lyd)

C61 AGM7 G#-7 E lyd

E7 BMM A-7 C lyd

F7 CMM B-7 3 7 E7b9

A-7 3 7 D7b9 Gmaj7

A7 A-7 Ab7

Gmaj7 (Ab7)

ANTONIO CARLOS JOBIM - "GETZ/GILBERTO"

"THE COMPOSER OF DESAFINADO, PLAYS"

E^b ver.

THE GIRL FROM IPANEMA

-JOBIM

171.

(BOSSA)

Handwritten musical score for "The Girl From Ipanema" in E-flat major. The score consists of ten staves of music. The first two staves are the main melody, with a first ending and a second ending. The remaining eight staves are guitar accompaniment, featuring various chords and melodic lines with triplets. The chords are: Dmaj7, E7, E-7, Eb7, Ebmaj7, G#7, D#-7, B7, E-7, C7, F#-7, B7b9, E-7, A7b9, Dmaj7, E7, E-7, Eb7, Dmaj7, and (Eb7). The score includes slurs, accents, and triplet markings.

The Girl From Ipanema Chords by Frank Sinatra

[Verse 1]

Fmaj7

Tall and tanned and young and lovely

G7

The girl from ipanema goes walking

Gm7

F#7b5

Fmaj7 F#7b5

And when she passes, each one she passes goes - ahhh!

Fmaj7

When she walks, shes like a samba

G7

That swings so cool and sways so gentle

Gm7

F#7b5

Fmaj7

That when she passes, each one she passes goes - oohh!

[Chorus]

F#maj7

B9

Oh, but I watch her so sadly,

F#m7

D9

How can I tell her I love her?

Gm7

Eb9

Yes, I would give my heart gladly

Am7

Abm7

But each day, when she walks to the sea

Gm7

F#7b5

She looks straight ahead, not at me

[Verse 2]

Fmaj7

Tall, and tanned and young and lovely

G7

The girl from Ipanema goes walking

Gm7

F#7b5

Fmaj7

And when she passes, I smile - but she doesnt see

F#7b5

Fmaj7 F#7b5

Fmaj7

F#7b5 Fmaj7

She just doesn't see, no, she just doesn't see...

[Verse 3]

Fmaj7

G7

Olha, que coisa mais linda, Mais cheia de graça,

G7

Gm7

É ela, menina, que vem e que passa

Gm7

F#7b5

Fmaj7 F#7b5

Num doce balanço, a caminho do mar

Fmaj7

G7

Moça do corpo dourado, do sol de ipanema,

G7

Gm7

O seu balançado mais que um poema

F#7b5 **Fmaj7**
a coisa mais linda que eu já vi passar

[Solo]

Fmaj7 G7 Gm7 F#7b5 Fmaj7 F#7b5

[Chorus]

F#maj7 **B9**
Oh, but I watch her so sadly,
F#m7 **D9**
How can I tell her I love her?
Gm7 **Eb9**
Yes, I would give my heart gladly
Am7 **Abm7**
But each day, when she walks to the sea
Gm7 **F#7b5**
She looks straight ahead, not at me

[Verse 4]

Fmaj7
Tall, and tanned and young and lovely
G7
The girl from Ipanema goes walking
Gm7 **F#7b5** **Fmaj7**
And when she passes, I smile - but she doesn't see
F#7b5 **Fmaj7 F#7b5** **Fmaj7** **F#7b5 Fmaj7**
She just doesn't see, no, she just doesn't see